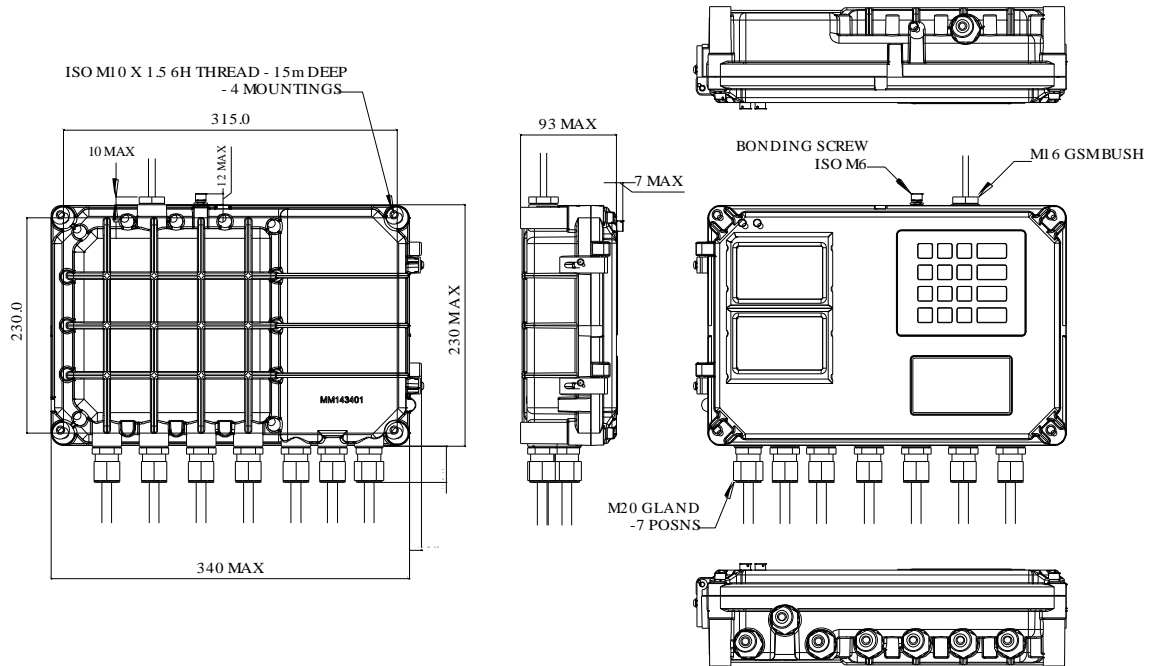
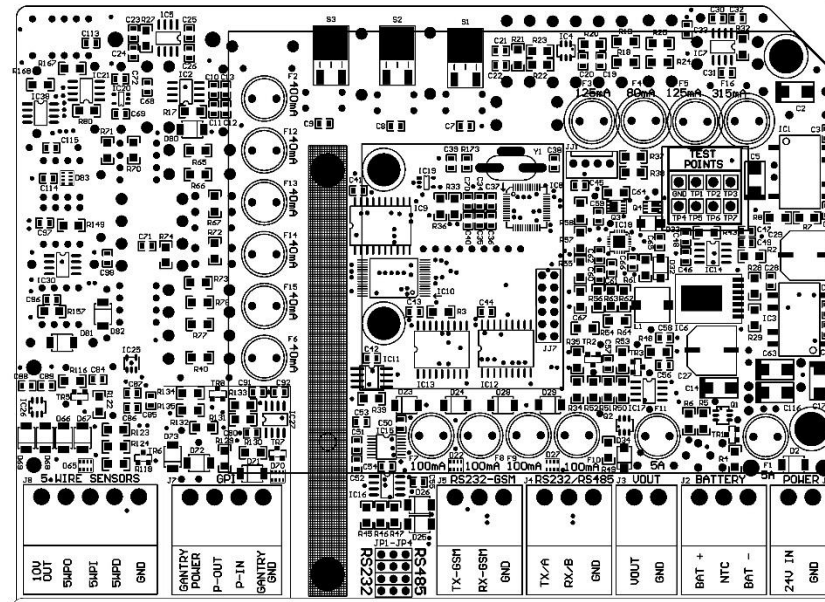
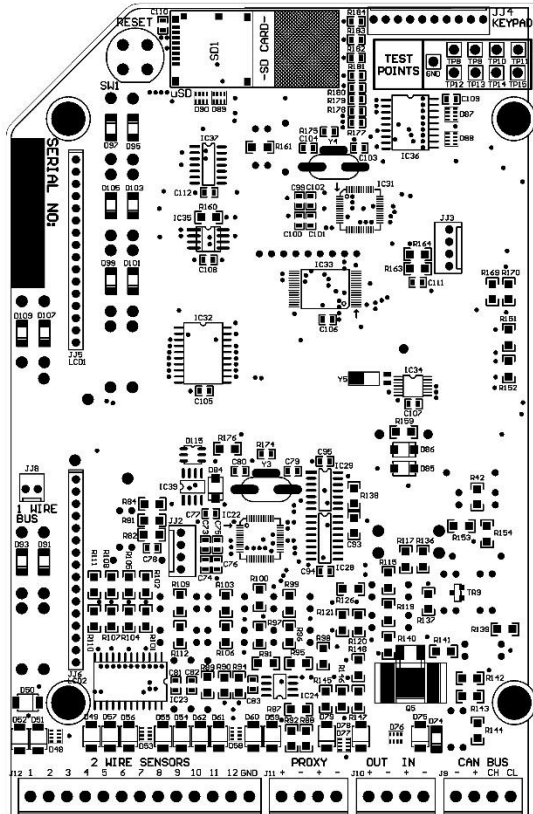


## SCS-400 Technical Specifications

Safety Approvals		
IECEX	Ex d ia [ia Ga] [ib Gb] IIA T4 Gb	IECEX ICS 16.0006X
NEPSI	Ex d ia ib IIA T4 Ga/Gb	GYJ16.1373X
Environmental		
Operating Temperature	-20°C to +60°C	
Protection Class	IP65	
Materials		
Enclosure	Cast Aluminium, Alodined and Powder Coated	
User Interface		
Keypad	Customised 16 key, Alpha Numeric, Stainless Steel, Vandal Proof	
Display	2 X 3.5" LCD Screens, 240X160 Resolution	
Connections		
Cable Entries	3 X M20 X 1,5 Intrinsically Safe Gland Entries (Exi) 4 X M20 X 1,5 Flameproof Gland Entries (Exd)	
GSM Entry	1 X M16 X 1,5 Flameproof Bush (Exd)	
Electrical		
Input Voltage	24 VDC	
Battery Backup	Lithium-Ion 18V 2200mA/h (Fuse Protected & Encapsulated)	
Inputs	16 X Exi 2 Wire Retain Wet/Dry Optic Inputs 24 X Exi Namur Proximity Inputs 2 X Exi General Purpose / Namur Inputs 1 X Exi General Purpose Input	
Output	1 X Exi General Purpose Output 1 X Exd 24VDC / 18VDC Power Output (Battery Backed-up)	
Overfill Interface	12 X 5-Wire Overfill Sensors (EN13922)	
Communication Ports	1 X Exd RS485 / RS232 1 X Exd GSM / RS232 1 X Exi CAN BUS (Sensor Interface) 1 X Exi 1-Wire Bus (SHA iButton Interface)	
Protocols	CAN Open NEMA SHA iButton	
Sensor Interface		
Max of 30 Nodes:	API-400 (API Adaptor Open/Close, Wet/Dry) BVS-100 (Bottom Valve Open/Close) MAN-400 (Manhole Open/Close) REF-400 (GPS + Inclination) RIO-200 (Remote Input / Output Interface. E.g. Pneumatic Control)	

<b>Data Storage</b>	
	12Mbyte Non-Volatile Memory (Stores up to 200 000 events)
<b>Weights &amp; Dimensions</b>	
	7kg





J12	J11	J10	JS
1 2 3 4 5 6 7 8 9 10 11 12 13	1 2 3 4	1 2 3 4	1 2 3 4
2 WIRE SENSORS	NAMUR INPUTS	OUTPUT + INPUT	CAN BUS
1. Compartment 1 2. Compartment 2 3. Compartment 3 4. Compartment 4 5. Compartment 5 6. Compartment 6 7. Compartment 7 8. Compartment 8 9. Compartment 9 10. Compartment 10 11. Compartment 11 12. Compartment 12 13. Ground	1. Namur 1 Brown 2. Namur 1 Blue 3. Namur 2 Brown 4. Namur 2 Blue	1. Switched 12V Out 2. Output GND 3. Input 4. Input GND	1. GCAN 2. UCAN 3. CAN H 4. CAN L

J6	J7	J5	J4	J3	J2	J1
5W SENSOR GREY 5W SENSOR YELLOW 5W SENSOR BLUE 5W SENSOR GREEN 5W SENSOR WHITE	OPTIC SOCKET PIN 8 OPTIC SOCKET PIN 6 OPTIC SOCKET PIN 4 OPTIC SOCKET PIN 10	AUX GSM PORT IF GSM NOT USED	RS232 OR RS485	12V OUTPUT TO RI0-200	BBU-500	VEHICLE BATTERY